



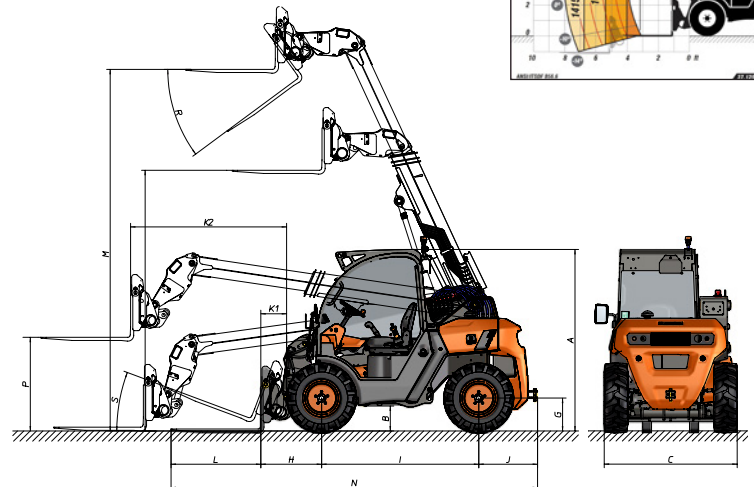
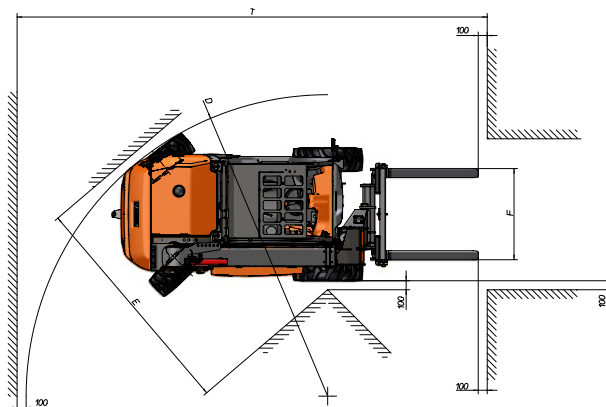
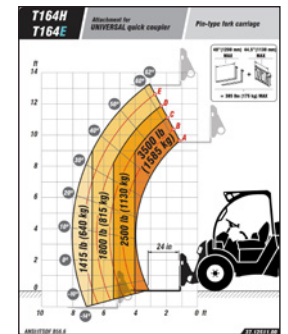
TECHNICAL DATA

GENERAL		T164H
Load capacity	lb	3,500
Load capacity at maximum height	lb	1,800
Maximum height	ft	13.1
Maximum lift under maximum load	ft	10.8
Maximum reach	ft	5.7
Maximum load at maximum reach	lb	1,415
Unladen weight *	lb	7,430
Transmission	-	Hydrostatic
ENGINE		
Make	-	KUBOTA
Model	-	V1505-E4B
Power	hp@rpm	24.8@2300
Torque	Nm@rpm	92.6@1700
No. cylinders	-	4
Emissions	-	Stage V - EPA Tier 4
DRIVING		
Maximum speed	mph	12.4
Gradeability under full load	%	40
Traction	-	4X4 FullGrip®
Front tyres	-	10/75-15.3
Rear tyres	-	10/75-15.3
HYDRAULIC SYSTEM		
Flow rate	gal/min	7.6
Working pressure	psi	3,045
TANK CAPACITY		
Fuel	gal	14.5
Hydraulic	gal	8.7
BRAKES		
Service	-	Hydraulic and regenerative
Parking	-	Negative brake

\* It may change due to optional equipment

# DIMENSIONS

Universal carriage



DIMENSIONS (in)		T164H
A		80
B		11
C		58
D		135
E		100
F		40
G		14
H		27
I		69
J		26
K	11	68
L		39
M		159
N		161
O		114
P		43
T		202
DIMENSIONS (°)		
R		37
S		20

▲ 1

▲ 2



[www.ausa.com](http://www.ausa.com)

Products are subject to modifications without prior notice. Images throughout the spec sheet may refer to non-standard machines or non-available configurations depending on models.

AUSA's logo and corporate identity are property of the Company, they cannot be used without authorization.